



ES	SPAIN
----	-------

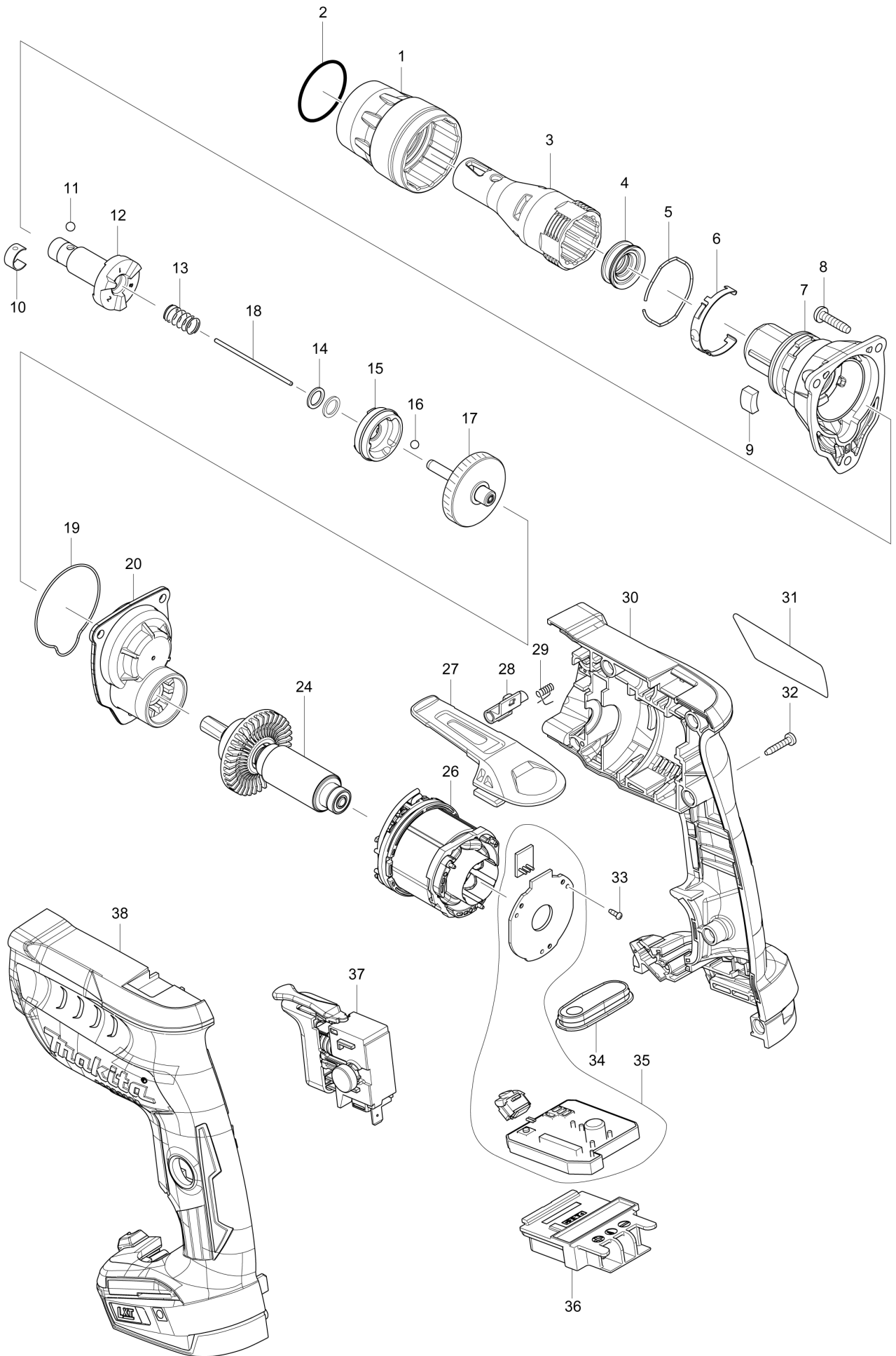
Diagram / Parts List

DFS452

CORDLESS SCREWDRIVER



(ES) DFS452 / CORDLESS SCREWDRIVER



ES

SPAIN

DFS452 / CORDLESS SCREWDRIVER

Item	Sub	Parts No.	Parts Description	Qty	I/C	E/C No.	Close No.	Remark
001		455591-0	LOCK RING	1				
002		424235-3	SEAL RING 30	1				
003		158875-2	LOCATOR S COMPLETE	1				
004		424665-8	DUST SEAL SLEEVE	1				
005		234348-0	RING SPRING 30	1				
006		232245-4	LEAF SPRING	1				
007		142902-5	GEAR HOUSING COMPLETE	1				
	C10	213796-6	OIL SEAL 11	1				
008		265995-6	TAPPING SCREW 4X18	3			C7193	
008-1		265A48-7	TAPPING SCREW 4X18	3	O	C7193		
009		423413-2	RUBBER PLATE	1				
010		232050-9	LEAF SPRING	1				
011		216001-0	STEEL BALL 3.5	1				
012		142903-3	SPINDLE 125S COMPLETE	1				
013		234121-8	COMPRESSION SPRING 8	1				
014		267202-3	FLAT WASHER 8	2				
015		223181-5	CLUTCH CAM 125S	1				
016		216008-6	STEEL BALL 4	3				
017		142904-1	GEAR COMPLETE	1				
	C10	424663-2	SEAL	1				
018		268325-0	ROD 2	1				
019		424664-0	SEAL RING	1				
020		142909-1	GEAR HOUSING COVER COMPLETE	1				
024		519355-7	ROTOR ASS'Y	1			D4336	
024-1		510472-6	ROTOR ASS'Y	1	O	D4336	D5555	
024-2		519664-4	ROTOR ASS'Y	1	O	D5555		
026		629135-4	STATOR	1				
027		162272-6	HOOK	1				
028		142908-3	LEVER COMPLETE	1			C7675	
028-1		140M84-5	LEVER COMPLETE	1	<	C7675		
029		233619-2	TORSION SPRING 3	1				
030		187993-9	HOUSING SET	1				
	C10	263005-3	RUBBER PIN 6	2				
	D10		INC. 38					
031		850H34-9	DFS452 NAME PLATE	1				
032		266130-9	TAPPING SCREW BIND PT 3X16	7				
033		266490-9	TAPPING SCREW PT 2X6	3				
034		142905-9	SWITCH PLATE COMPLETE	1				
035A		620349-8	CONTROLLER	1			Y07276	
035B		620349-8	CONTROLLER	1			Y07276	
035C		620349-8	CONTROLLER	1			Y07276	
035D		620349-8	CONTROLLER	1			Y07276	
035E		620349-8	CONTROLLER	1			Y07276	
035F		620349-8	CONTROLLER	1			Y07276	
035G		620349-8	CONTROLLER	1			Y07276	
035H		620349-8	CONTROLLER	1			Y07276	
035-1A		620360-0	CONTROLLER COMPLETE	1	S	Y07276	DC278	
	D10		INC. 36			Y07276	DC278	
035-1B		620360-0	CONTROLLER COMPLETE	1	S	Y07276	DC278	
	D10		INC. 36			Y07276	DC278	
035-1C		620360-0	CONTROLLER COMPLETE	1	S	Y07276	DC278	
	D10		INC. 36			Y07276	DC278	
035-1D		620360-0	CONTROLLER COMPLETE	1	S	Y07276	DC278	
	D10		INC. 36			Y07276	DC278	
035-1E		620360-0	CONTROLLER COMPLETE	1	S	Y07276	DC278	
	D10		INC. 36			Y07276	DC278	
035-1F		620360-0	CONTROLLER COMPLETE	1	S	Y07276	DC278	
	D10		INC. 36			Y07276	DC278	
035-1G		620360-0	CONTROLLER COMPLETE	1	S	Y07276	DC278	
	D10		INC. 36			Y07276	DC278	
035-1H		620360-0	CONTROLLER COMPLETE	1	S	Y07276	DC278	
	D10		INC. 36			Y07276	DC278	
035-1I		620360-0	CONTROLLER COMPLETE	1			DC278	
	D10		INC. 36				DC278	
035-2		620J39-3	CONTROLLER COMPLETE	1	<	DC278		

A:DFS452Z(N)
B:DFS452RFE(H)
C:DFS452RFJ(H)
D:DFS452RMJ(H)
E:DFS452ZJ(N)
F:DFS452RME(H)

G:DFS452RAJ(H)
H:DFS452RTJ(H)
I:DFS452RYE(H)

Interchange

O : Yes

X : No

< : the new part can be substituted for the current.

> : the current part can be substituted for the new.

S : Interchangeable as a set.

ES

SPAIN

DFS452 / CORDLESS SCREWDRIVER

Item	Sub	Parts No.	Parts Description	Qty	I/C	E/C No.	Close No.	Remark
	C10	620J38-5	CONTROLLER	1		DC278		
	D10		INC. 36					
036A		643860-3	TERMINAL	1			Y07276	
036B		643860-3	TERMINAL	1			Y07276	
036C		643860-3	TERMINAL	1			Y07276	
036D		643860-3	TERMINAL	1			Y07276	
036E		643860-3	TERMINAL	1			Y07276	
036F		643860-3	TERMINAL	1			Y07276	
036G		643860-3	TERMINAL	1			Y07276	
036H		643860-3	TERMINAL	1			Y07276	
036-1A		643860-3	TERMINAL	1	O	Y07276		
036-1B		643860-3	TERMINAL	1	O	Y07276		
036-1C		643860-3	TERMINAL	1	O	Y07276		
036-1D		643860-3	TERMINAL	1	O	Y07276		
036-1E		643860-3	TERMINAL	1	O	Y07276		
036-1F		643860-3	TERMINAL	1	O	Y07276		
036-1G		643860-3	TERMINAL	1	O	Y07276		
036-1H		643860-3	TERMINAL	1	O	Y07276		
036-1I		643860-3	TERMINAL	1				
037		650733-3	SWITCH C3JW-4B-2L	1				
038		187993-9	HOUSING SET	1				
	C10	263005-3	RUBBER PIN 6	2				
	D10		INC. 30					
039		850H36-5	DFS452 SERIAL NO. LABEL	1				
A01		266622-8	+ TRUSS HEAD SCREW M4X12	1				
A02A		346317-0	HOOK	1				
A02B		346317-0	HOOK	1				
A02C		346317-0	HOOK	1				
A02D		346317-0	HOOK	1				
A02E		346317-0	HOOK	1				
A02F		346317-0	HOOK	1				
A02G		346449-3	HOOK	1				
A02H		346317-0	HOOK	1				
A02I		346449-3	HOOK	1				
A03		784261-7	+BIT 2-25	2				
A04		784813-4	MAGNETIC BIT HOLDER 6.35-60	1				
A05B		450128-8	BATTERY COVER	1				
A05C		450128-8	BATTERY COVER	1				
A05D		450128-8	BATTERY COVER	1				
A05E		821550-0	CONNECTOR PLASTIC CASE (TYPE2)	1				
	C10	453974-8	LATCH	4				
A05F		450128-8	BATTERY COVER	1				
A05G		450128-8	BATTERY COVER	1				
A05H		450128-8	BATTERY COVER	1				
A05I		450128-8	BATTERY COVER	1				
A06B		***DC18RC	DC18RC FAST CHARGER	1				
A06C		***DC18RC	DC18RC FAST CHARGER	1				
A06D		***DC18RC	DC18RC FAST CHARGER	1				
A06E		837805-3	INNER TRAY	1				
A06F		***DC18RC	DC18RC FAST CHARGER	1				
A06G		***DC18RC	DC18RC FAST CHARGER	1				
A06H		***DC18RC	DC18RC FAST CHARGER	1				
A06I		***DC18RC	DC18RC FAST CHARGER	1				
A07B		194204-5	BATTERY BL1830 SET	2			A5588	
A07C		194204-5	BATTERY BL1830 SET	2			A5588	
A07D		196399-0	BATTERY BL1840 SET	2			A5588	
A07E		805F24-5	DFS452ZJ INDICATION LABEL	1				
A07F		196399-0	BATTERY BL1840 SET	2			A5588	
A07-1B		194204-5	BATTERY BL1830 SET	2	O	A5588	B2535	
A07-1C		194204-5	BATTERY BL1830 SET	2	O	A5588	B2535	
A07-1D		196399-0	BATTERY BL1840 SET	2	O	A5588		
A07-1F		196399-0	BATTERY BL1840 SET	2	O	A5588		
A07-1G		196460-3	BATTERY BL1820 SET	2			B1798	
A07-1H		197280-8	BATTERY BL1850B SET	2			C5219	
A07-1I		196235-0	BATTERY BL1815N SET	2				

A:DFS452Z(N)
B:DFS452RFE(H)
C:DFS452RFJ(H)
D:DFS452RMJ(H)
E:DFS452ZJ(N)
F:DFS452RME(H)

G:DFS452RAJ(H)
H:DFS452RTJ(H)
I:DFS452RYE(H)

Interchange

O : Yes

X : No

< : the new part can be substituted for the current.

> : the current part can be substituted for the new.

S : Interchangeable as a set.

