



ES

SPAIN

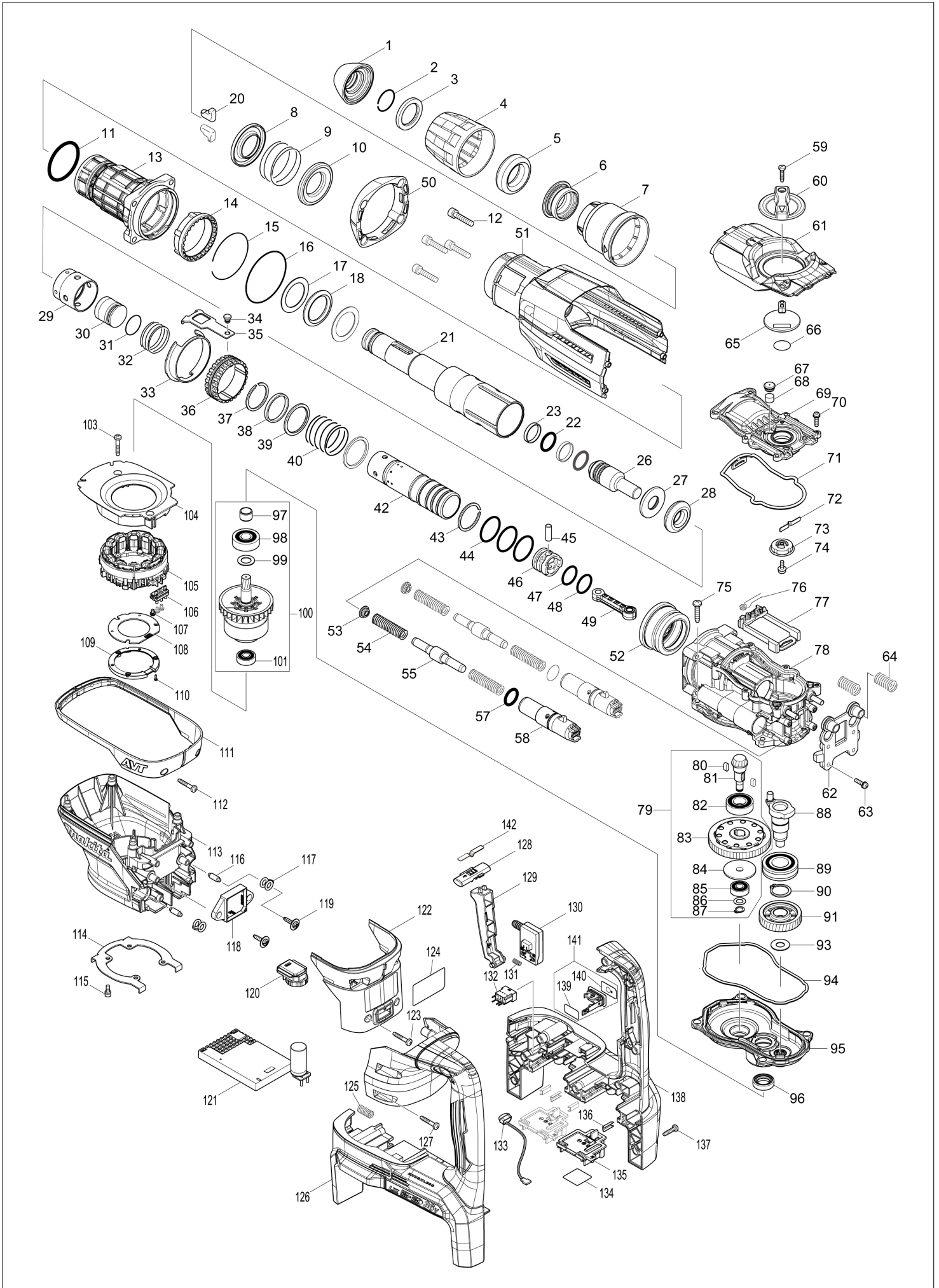
Diagram / Parts List

DHR400

40MM CORDLESS ROTARY HAMMER



(ES) DHR400 / 40MM CORDLESS ROTARY HAMMER



ES

SPAIN

DHR400 / 40MM CORDLESS ROTARY HAMMER

Item	Sub	Parts No.	Parts Description	Qty	I/C	E/C No.	Close No.	Remark
001		286292-7	TOOL HOLDER CAP	1				
002		233948-3	RING SPRING 25	1				
003		257308-5	RING 28	1				
004		454330-5	CHUCK COVER	1				
005		262167-4	RUBBER RING 30	1				
006		326272-2	CHUCK RING	1				
007		454331-3	RELEASE COVER	1				
008		346670-4	SPRING GUIDE	1				
009		234288-2	COMPRESSION SPRING 46	1				
010		346670-4	SPRING GUIDE	1				
011		213615-6	O RING 46	1				
012		922351-0	HEX. SOCKET HEAD BOLT M6X30	4				
013		141956-9	BARREL COMPLETE	1				
	C10	213246-1	O-RING 38 SA1004	1				
	C20	213490-0	OIL SEAL 32	1				
	C30	213492-6	O-RING 32	1				
	C40	214457-1	PLANE BEARING 32	1				
	C50	233963-7	RING SPRING 45	1				
014		454337-1	LOCK SLEEVE	1				
015		234290-5	RING SPRING 59	1				
016		213707-1	O RING 65	1				
017		267469-3	FLAT WASHER 32	2				
018		262168-2	RUBBER RING 32	1				
020		310257-8	TOOL RETAINER	2				
021		326268-3	TOOL HOLDER	1				
022		213317-4	O RING 20	2				
023		213392-0	FLUORIDE RING 25	2				
026		326269-1	IMPACT BOLT	1				
027		326274-8	RING 17	1				
028		262166-6	RUBBER RING 18	1				
029		454347-8	SLIDE SLEEVE	1				
030		326270-6	STRIKER	1				
031		213695-2	O-RING 22	1				
032		234289-0	COMPRESSION SPRING 33	1				
033		346673-8	GUIDE RING	1				
034		256548-2	FLAT FILLISTER HEAD PIN 6	1				
035		346671-2	LINK PLATE	1				
036		313255-1	DRIVING SLEEVE	1				
037		257991-8	RETAINING RING (EXT) WR-32.5	1				
038		257340-9	RING 33	1				
039		267470-8	FLAT WASHER 33	2				
040		234287-4	COMPRESSION SPRING 34	1				
042		332063-1	CYLINDER 28.5	1				
043		257991-8	RETAINING RING (EXT) WR-32.5	1				
044		213406-5	O RING 30	3				
045		256197-5	PIN 7	1				
046		419004-5	PISTON	1				
047		213379-2	O RING 21	1				
048		213695-2	O-RING 22	1				
049		454317-7	CONNECTING ROD	1				
050		424560-2	HOUSING CAP	1				
051		141957-7	HOUSING COVER A COMPLETE	1				
052		227613-4	SPIRAL BEVEL GEAR 26	1				
053		454342-8	SPRING PLATE	2				
054		234286-6	COMPRESSION SPRING 11	4				
055		326273-0	COUNTER WEIGHT	2				
057		213325-5	O RING 19	2				
058		142289-5	HOLDER COMPLETE	2				
059		265995-6	TAPPING SCREW 4X18	1				
060		454326-6	CHANGE LEVER	1				
061		319652-9	CRANK CAP COVER	1				
062		458098-5	SPRING HOLDER	1				
063		911128-8	P.H.SCREW M4X16 WITH WR	4				
064		234282-4	COMPRESSION SPRING 12	2				
065		454345-2	CRANK LEVER	1				

A:DHR400ZKU(N)
 B:DHR400PT2U(H)
 C:DHR400ZK(N)
 D:DHR400PT2(H)
 E:DHR400ZKUN(N)
 F:DHR400T2UN(H)

G:DHR400ZKN(N)
 H:DHR400T2N(H)

Interchange

O : Yes

X : No

< : the new part can be substituted for the current.

> : the current part can be substituted for the new.

S : Interchangeable as a set.

ES

SPAIN

DHR400 / 40MM CORDLESS ROTARY HAMMER

Item	Sub	Parts No.	Parts Description	Qty	I/C	E/C No.	Close No.	Remark
066		213262-3	O RING 18	1				
067		424556-3	FILTER CAP	1				
068		443182-9	FILTER	1				
069		454319-3	CRANK CAP	1				
070		911128-8	P.H.SCREW M4X16 WITH WR	6				
071		424559-7	SEAL RING B	1				
072		232280-2	LEAF SPRING	1				
073		458100-4	LINK LEVER	1				
074		911511-9	PAN HEAD SCREW M4X10	1				
075		266041-8	TAPPING SCREW 5X25	4				
076		233603-7	TORSION SPRING 7	1				
077		454338-9	LINK GUIDE	1				
078		141953-5	CRANK HOUSING A COMPLETE	1				
079		126290-8	TORQUE LIMITER ASSEMBLY	1				
	D10		INC. 80-87					
080		254239-9	KEY 4	2				
081		227612-6	SPIRAL BEVEL GEAR 7	1				
082		211232-6	BALL BEARING 6002LLU	1				
083		141959-3	TORQUE LIMITER COMPLETE	1				
084		324727-1	SHOULDER WASHER 8	1				
085		210005-4	BALL BEARING 608DDW	1				
086		253215-0	FLAT WASHER 8	1				
087		961004-6	RETAINING RING S-8	1				
088		326271-4	CRANK SHAFT	1				
089		210183-0	BALL BEARING 6004LLU	1				
090		961060-6	RETAINING RING S-20	1				
091		227772-4	HELICAL GEAR 37	1				
093		253180-3	FLAT WASHER 10	1				
094		424558-9	SEAL RING A	1				
095		141955-1	GEAR HOUSING COMPLETE	1				
096		213231-4	OIL SEAL 15	1				
097		331596-3	SLEEVE 12	1				
098		211137-0	BALL BEARING 6201LLU	1				
099		253744-3	FLAT WASHER 12	1				
100		519492-7	ROTOR ASSY	1			D9298	
	D10		INC. 97-99,101				D9298	
100-1		519707-2	ROTOR ASSY	1	O	D9298		
	D10		INC. 97-99,101			D9298		
101		210005-4	BALL BEARING 608DDW	1				
103		265999-8	TAPPING SCREW 4X25	2				
104		458099-3	BAFFLE PLATE	1				
105		629335-6	STATOR	1				
106		632L39-3	LEAD UNIT	1				
107		652031-1	PAN HEAD SCREW M3X6	3				
108		620795-5	CONTROLLER B	1				
109A		687877-6	STOPPER	1			C6948	
109B		687877-6	STOPPER	1			C6948	
109C		687877-6	STOPPER	1			C6948	
109D		687877-6	STOPPER	1			C6948	
109-1A		687B69-9	STOPPER	1	<	C6948		
109-1B		687B69-9	STOPPER	1	<	C6948		
109-1C		687B69-9	STOPPER	1	<	C6948		
109-1D		687B69-9	STOPPER	1	<	C6948		
109-1E		687B69-9	STOPPER	1				
109-1F		687B69-9	STOPPER	1				
109-1G		687B69-9	STOPPER	1				
109-1H		687B69-9	STOPPER	1				
110		266490-9	TAPPING SCREW PT 2X6	3				
111		454348-6	GUARD 40	1				
112		265999-8	TAPPING SCREW 4X25	2				
113		458051-1	MOTOR HOUSING	1				
114		347299-9	GUIDE PLATE	1				
115		922111-0	HEX. SOCKET HEAD BOLT M4X10	4				
116		256380-4	SHOULDER PIN 4-6	2				
117A		422241-2	DOUBLE O-RING	2				

A:DHR400ZKU(N)
B:DHR400PT2U(H)
C:DHR400ZK(N)
D:DHR400PT2(H)
E:DHR400ZKUN(N)
F:DHR400T2UN(H)

G:DHR400ZKN(N)
H:DHR400T2N(H)

Interchange

O : Yes

X : No

< : the new part can be substituted for the current.

> : the current part can be substituted for the new.

S : Interchangeable as a set.

ES

SPAIN

DHR400 / 40MM CORDLESS ROTARY HAMMER

Item	Sub	Parts No.	Parts Description	Qty	I/C	E/C No.	Close No.	Remark
117B		422241-2	DOUBLE O-RING	2				
117C		422241-2	DOUBLE O-RING	2				
117D		422241-2	DOUBLE O-RING	2				
117E		422462-6	SPONGE WASHER	4				
117F		422462-6	SPONGE WASHER	4				
117G		422462-6	SPONGE WASHER	4				
117H		422462-6	SPONGE WASHER	4				
118A		620797-1	ACCELEROMETER CIRCUIT	1				
118B		620797-1	ACCELEROMETER CIRCUIT	1				
118C		620797-1	ACCELEROMETER CIRCUIT	1				
118D		620797-1	ACCELEROMETER CIRCUIT	1				
118E		620997-3	ACCELEROMETER CIRCUIT	1				
118F		620997-3	ACCELEROMETER CIRCUIT	1				
118G		620997-3	ACCELEROMETER CIRCUIT	1				
118H		620997-3	ACCELEROMETER CIRCUIT	1				
119		251599-0	TAPPING SCREW 4X18	2				
120		620796-3	DIAL CIRCUIT	1				
121A		620794-7	CONTROLLER	1				
121B		620794-7	CONTROLLER	1				
121C		620794-7	CONTROLLER	1				
121D		620794-7	CONTROLLER	1				
121E		620996-5	CONTROLLER	1				
121F		620996-5	CONTROLLER	1				
121G		620996-5	CONTROLLER	1				
121H		620996-5	CONTROLLER	1				
122		458054-5	CONTROLLER COVER	1				
123		265999-8	TAPPING SCREW 4X25	2				
124		854C13-9	DHR400 NAME PLATE	1				
125		232411-3	COMPRESSION SPRING 8	1				
126A		183J10-3	HOUSING SET	1			C2794	
	C10	263005-3	RUBBER PIN 6	8			C2794	
	D10		INC. 138				C2794	
126B		183J10-3	HOUSING SET	1			C2794	
	C10	263005-3	RUBBER PIN 6	8			C2794	
	D10		INC. 138				C2794	
126-1A		183J10-3	HOUSING SET	1	<	C2794		
	C10	263005-3	RUBBER PIN 6	8		C2794		
	D10		INC. 138			C2794		
126-1B		183J10-3	HOUSING SET	1	<	C2794		
	C10	263005-3	RUBBER PIN 6	8		C2794		
	D10		INC. 138			C2794		
126-1C		183J10-3	HOUSING SET	1				
	C10	263005-3	RUBBER PIN 6	8				
	D10		INC. 138					
126-1D		183J10-3	HOUSING SET	1				
	C10	263005-3	RUBBER PIN 6	8				
	D10		INC. 138					
126-1E		183L07-4	HOUSING SET	1				
	C10	263005-3	RUBBER PIN 6	8				
	D10		INC. 138					
126-1F		183L07-4	HOUSING SET	1				
	C10	263005-3	RUBBER PIN 6	8				
	D10		INC. 138					
126-1G		183L07-4	HOUSING SET	1				
	C10	263005-3	RUBBER PIN 6	8				
	D10		INC. 138					
126-1H		183L07-4	HOUSING SET	1				
	C10	263005-3	RUBBER PIN 6	8				
	D10		INC. 138					
127		265999-8	TAPPING SCREW 4X25	4				
128		458096-9	TRIGGER LOCK	1				
129		458097-7	SWITCH LEVER	1				
130		651083-9	SWITCH C3XA-1PSPM	1				
131		232418-9	COMPRESSION SPRING 5	1				
132		632L47-4	CONNECTOR UNIT	1				

A:DHR400ZKU(N)
B:DHR400PT2U(H)
C:DHR400ZK(N)
D:DHR400PT2(H)
E:DHR400ZKUN(N)
F:DHR400T2UN(H)

G:DHR400ZKN(N)
H:DHR400T2N(H)

Interchange

O : Yes

X : No

< : the new part can be substituted for the current.

> : the current part can be substituted for the new.

S : Interchangeable as a set.

ES

SPAIN

DHR400 / 40MM CORDLESS ROTARY HAMMER

Item	Sub	Parts No.	Parts Description	Qty	I/C	E/C No.	Close No.	Remark
133		620549-0	LED CIRCUIT	1				
134		854C21-0	DHR400 SERIAL NO. LABEL	1				
135		644809-6	TERMINAL	2				
136		346783-1	PLATE	4				
137		265995-6	TAPPING SCREW 4X18	9				
138A		183J10-3	HOUSING SET	1			C2794	
	C10	263005-3	RUBBER PIN 6	8			C2794	
	D10		INC. 126				C2794	
138B		183J10-3	HOUSING SET	1			C2794	
	C10	263005-3	RUBBER PIN 6	8			C2794	
	D10		INC. 126				C2794	
138-1A		183J10-3	HOUSING SET	1	<	C2794		
	C10	263005-3	RUBBER PIN 6	8		C2794		
	D10		INC. 126			C2794		
138-1B		183J10-3	HOUSING SET	1	<	C2794		
	C10	263005-3	RUBBER PIN 6	8		C2794		
	D10		INC. 126			C2794		
138-1C		183J10-3	HOUSING SET	1				
	C10	263005-3	RUBBER PIN 6	8				
	D10		INC. 126					
138-1D		183J10-3	HOUSING SET	1				
	C10	263005-3	RUBBER PIN 6	8				
	D10		INC. 126					
138-1E		183L07-4	HOUSING SET	1				
	C10	263005-3	RUBBER PIN 6	8				
	D10		INC. 126					
138-1F		183L07-4	HOUSING SET	1				
	C10	263005-3	RUBBER PIN 6	8				
	D10		INC. 126					
138-1G		183L07-4	HOUSING SET	1				
	C10	263005-3	RUBBER PIN 6	8				
	D10		INC. 126					
138-1H		183L07-4	HOUSING SET	1				
	C10	263005-3	RUBBER PIN 6	8				
	D10		INC. 126					
139A		213275-4	O RING 18	1			C2104	
139B		213275-4	O RING 18	1			C2104	
139C		213275-4	O RING 18	1			C2104	
139D		213275-4	O RING 18	1			C2104	
139-1A		213218-6	O RING 16	1	<	C2104		
139-1B		213218-6	O RING 16	1	<	C2104		
139-1C		213218-6	O RING 16	1	<	C2104		
139-1D		213218-6	O RING 16	1	<	C2104		
139-1E		213218-6	O RING 16	1				
139-1F		213218-6	O RING 16	1				
139-1G		213218-6	O RING 16	1				
139-1H		213218-6	O RING 16	1				
140A		816A25-8	CAP LABEL	1			C3942	
140B		816A25-8	CAP LABEL	1			C3942	
140C		816A25-8	CAP LABEL	1			C3942	
140D		816A25-8	CAP LABEL	1			C3942	
140-1A		818H07-8	CAP LABEL	1	<	C3942		
140-1B		818H07-8	CAP LABEL	1	<	C3942		
140-1C		818H07-8	CAP LABEL	1	<	C3942		
140-1D		818H07-8	CAP LABEL	1	<	C3942		
140-1E		818H07-8	CAP LABEL	1				
140-1F		818H07-8	CAP LABEL	1				
140-1G		818H07-8	CAP LABEL	1				
140-1H		818H07-8	CAP LABEL	1				
141A		183H95-7	CAP SET	1			C2104	
	D10		INC. 139,140				C2104	
141B		183H95-7	CAP SET	1			C2104	
	D10		INC. 139,140				C2104	
141C		183H95-7	CAP SET	1			C2104	
	D10		INC. 139,140				C2104	

A:DHR400ZKU(N)
B:DHR400PT2U(H)
C:DHR400ZK(N)
D:DHR400PT2(H)
E:DHR400ZKUN(N)
F:DHR400T2UN(H)

G:DHR400ZKN(N)
H:DHR400T2N(H)

Interchange

O : Yes

X : No

< : the new part can be substituted for the current.

> : the current part can be substituted for the new.

S : Interchangeable as a set.

DHR400 / 40MM CORDLESS ROTARY HAMMER

Item	Sub	Parts No.	Parts Description	Qty	I/C	E/C No.	Close No.	Remark
141D		183H95-7	CAP SET	1			C2104	
	D10		INC. 139,140				C2104	
141-1A		183J86-0	CAP SET	1	O	C2104	C3942	
	D10		INC. 139,140			C2104	C3942	
141-1B		183J86-0	CAP SET	1	O	C2104	C3942	
	D10		INC. 139,140			C2104	C3942	
141-1C		183J86-0	CAP SET	1	O	C2104	C3942	
	D10		INC. 139,140			C2104	C3942	
141-1D		183J86-0	CAP SET	1	O	C2104	C3942	
	D10		INC. 139,140			C2104	C3942	
141-2A		140F99-0	CAP COMPLETE	1	<	C3942		
	D10		INC. 139,140			C3942		
141-2B		140F99-0	CAP COMPLETE	1	<	C3942		
	D10		INC. 139,140			C3942		
141-2C		140F99-0	CAP COMPLETE	1	<	C3942		
	D10		INC. 139,140			C3942		
141-2D		140F99-0	CAP COMPLETE	1	<	C3942		
	D10		INC. 139,140			C3942		
141-2E		140F99-0	CAP COMPLETE	1				
	D10		INC. 139,140					
141-2F		140F99-0	CAP COMPLETE	1				
	D10		INC. 139,140					
141-2G		140F99-0	CAP COMPLETE	1				
	D10		INC. 139,140					
141-2H		140F99-0	CAP COMPLETE	1				
	D10		INC. 139,140					
142		232280-2	LEAF SPRING	1				
A01		123138-5	SIDE GRIP ASSEMBLY	1				
A02		196792-8	SIDE HANDLE 73 SET	1				
A03		198993-4	GREASE VESSEL SET	1				
A04		821746-3	PLASTIC CASE	1				
	C10	162271-8	LATCH	2				
A05		331955-1	DEPTH GAUGE	1				
A06A		198900-7	WIRELESS UNIT SET	1		Y07670	D4357	
A06B		198900-7	WIRELESS UNIT SET	1		Y07670	D4357	
A06E		198900-7	WIRELESS UNIT SET	1			D4357	
A06F		198900-7	WIRELESS UNIT SET	1			D4357	
A06-1A		198900-7	WIRELESS UNIT SET	1	<	D4357	DB384	
A06-1B		198900-7	WIRELESS UNIT SET	1	<	D4357	DB384	
A06-1E		198900-7	WIRELESS UNIT SET	1	<	D4357	DB384	
A06-1F		198900-7	WIRELESS UNIT SET	1	<	D4357	DB384	
A06-2A		198900-7	WIRELESS UNIT SET	1	<	DB384		
A06-2B		198900-7	WIRELESS UNIT SET	1	<	DB384		
A06-2E		198900-7	WIRELESS UNIT SET	1	<	DB384		
A06-2F		198900-7	WIRELESS UNIT SET	1	<	DB384		
A07		443122-7	CLOTH	1				
A08B		***DC18RD	DC18RD TWO PORT FAST CHARGER	1				
	D10		COMPO-PARTS					
A08D		***DC18RD	DC18RD TWO PORT FAST CHARGER	1				
	D10		COMPO-PARTS					
A08F		***DC18RD	DC18RD TWO PORT FAST CHARGER	1				
	D10		COMPO-PARTS					
A08H		***DC18RD	DC18RD TWO PORT FAST CHARGER	1				
	D10		COMPO-PARTS					
A09B		197280-8	BATTERY BL1850B SET	2			C5219	
A09D		197280-8	BATTERY BL1850B SET	2			C5219	
A09F		197280-8	BATTERY BL1850B SET	2			C5219	
A09H		197280-8	BATTERY BL1850B SET	2			C5219	
A09-1B		197280-8	BATTERY BL1850B SET	2	O	C5219		
A09-1D		197280-8	BATTERY BL1850B SET	2	O	C5219		
A09-1F		197280-8	BATTERY BL1850B SET	2	O	C5219		
A09-1H		197280-8	BATTERY BL1850B SET	2	O	C5219		
B01		197298-9	HAMMER SERVICE KIT	1		Y08302		
	C10	181490-7	HAMMER GREASE 30G	2		Y08302		
	C20	197245-0	CARBON BRUSH CB-351	1		Y08302		

A:DHR400ZKU(N) G:DHR400ZKN(N)
 B:DHR400PT2U(H) H:DHR400T2N(H)
 C:DHR400ZK(N)
 D:DHR400PT2(H)
 E:DHR400ZKUN(N)
 F:DHR400T2UN(H)

Interchange
 O : Yes
 X : No
 < : the new part can be substituted for the current.
 > : the current part can be substituted for the new.
 S : Interchangeable as a set.

